

### **Blank Card**

You deserve a rest. Nothing happens but you still get a small information: Not all bacteria are bad. You cooperate with some of them and you help each other with daily problems - like digesting food.

### **Cell Division**

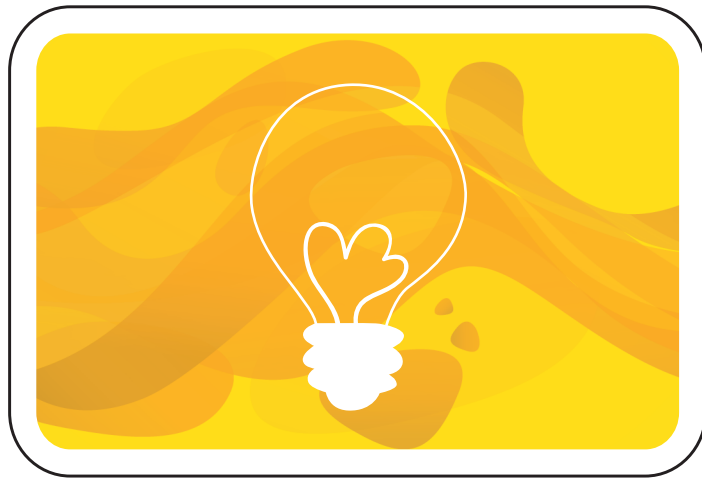
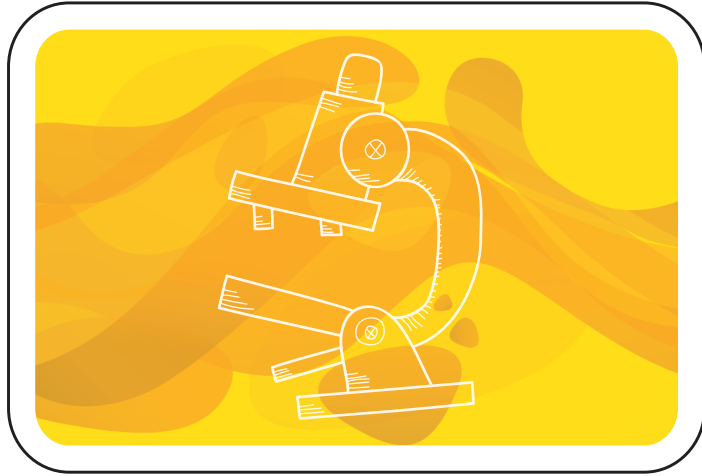
Your city (cell) grows steadily because of your collected wealth (food). You may roll the dice another time because your cell is dividing.

### **Change of Direction**

Sometimes, things are unpredictable - every player has to change directions!

### **Fusion**

You fuse with another cell! You are a team for 2 laps! If one of you rolls the dice, the other player may also go forward the same number of steps. If one of you draws a card, the other one is also effected! The dice decides who will be your fusion partner!



### **Conjugation**

You have the possibility to trade a mutation. Choose one of the other players but be warned - he/she decides which card will be yours!

### **Medication**

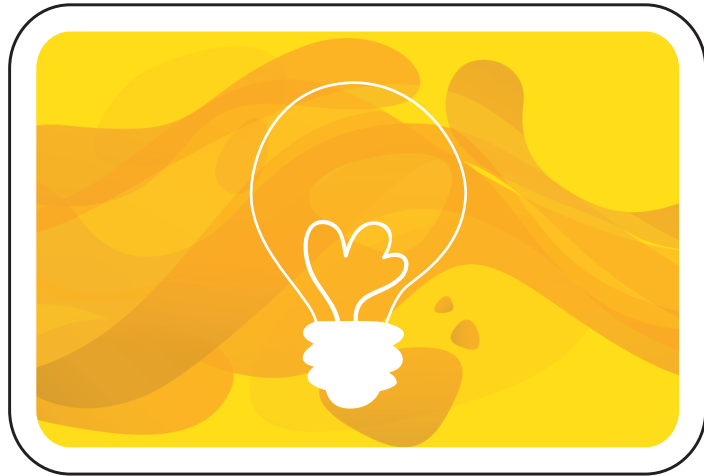
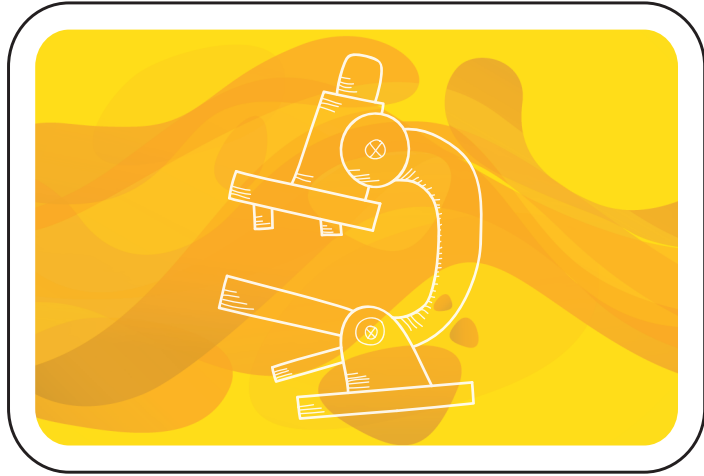
You receive the drug penicillin, an antibiotic. It protects you against bacteria once. When they attack, you win immediately and don't need to roll the dice. Put this card under the stack after the fight.

### **Mutation +1**

Mutation +1: Suddenly, your DNA changed. Draw a card from the mutation stack but be warned: Not all mutations offer advantages!

### **Mutation -1**

Suddenly, your DNA changed. That's why you lose your last mutation. Put the card under the mutation stack.



### **Infestation/War**

Your cell/city is under attack of bacteria/soldiers. Roll the dice to know if you win the battle. An even number means that you win; an odd number means that you lose. If you lose, go back 3 steps.

### **Regeneration/Miss**

You run short of resources. Your cell needs time to gather nutrients which are then transformed into energy by your mitochondria. That's why you miss one turn!

### **Regeneration/Miss**

The last battle with another cell or bacteria cost a lot of power. You have to recover and miss your next turn.

### **Exchange**

Your last nutrition uptake was superior! You have a huge amount of energy and get a boost. Pass the cell in front of you by 1 step.