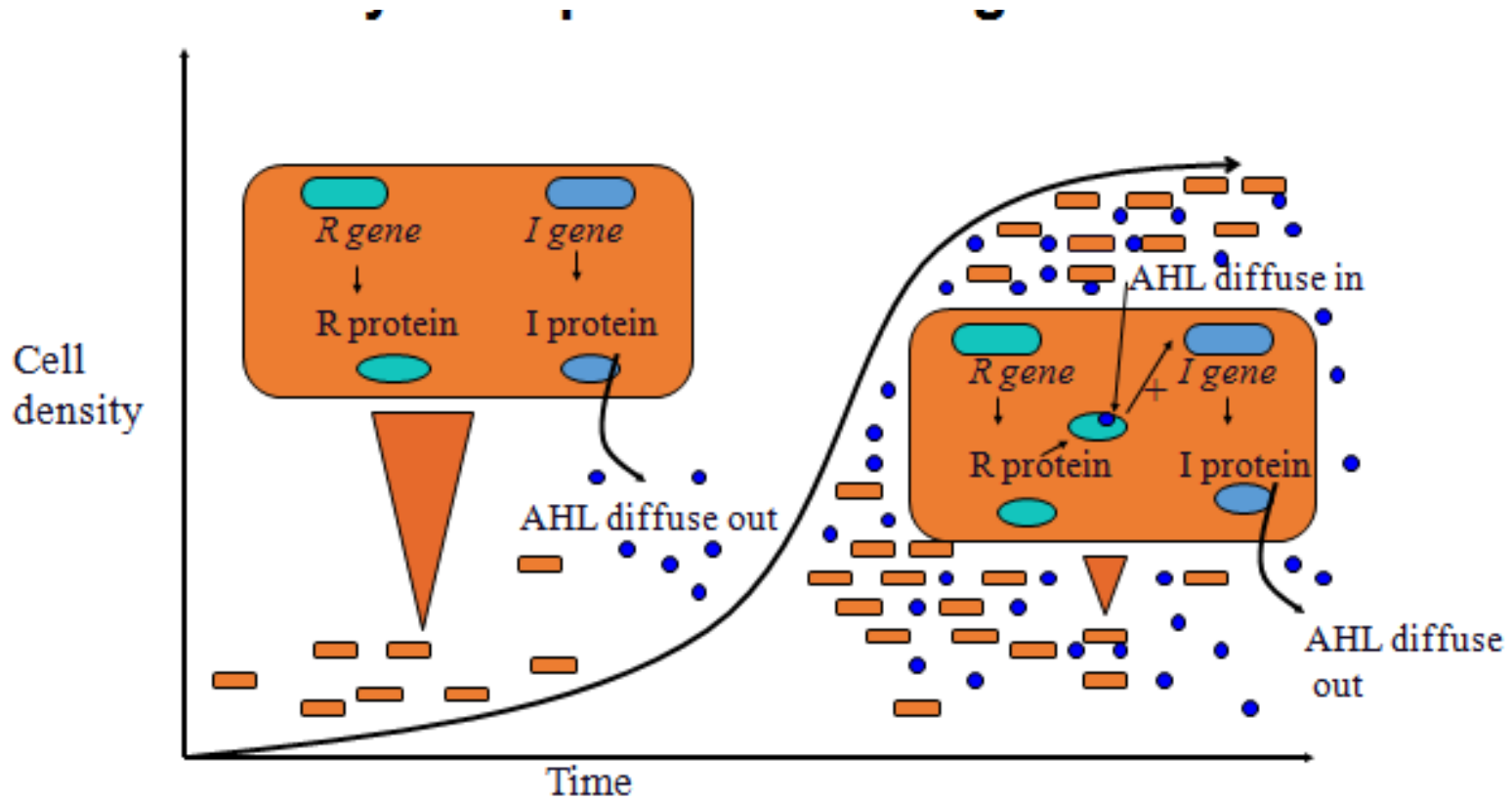


# iGEM project



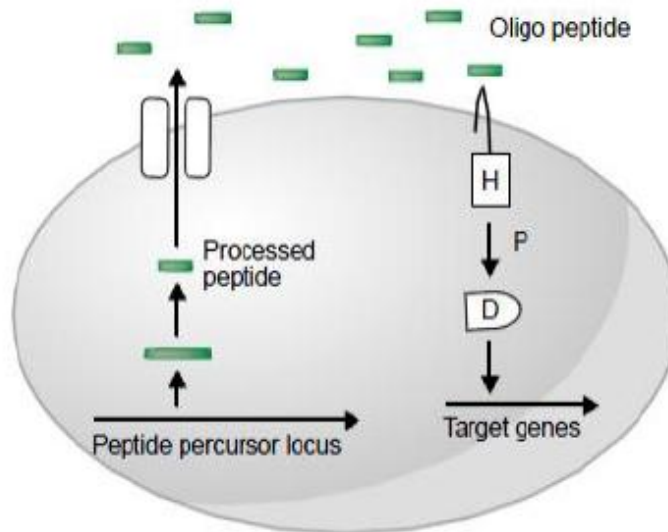
Soo Ji Lee

# Quorum sensing



# Gram positive

## Gram-positive bacteria

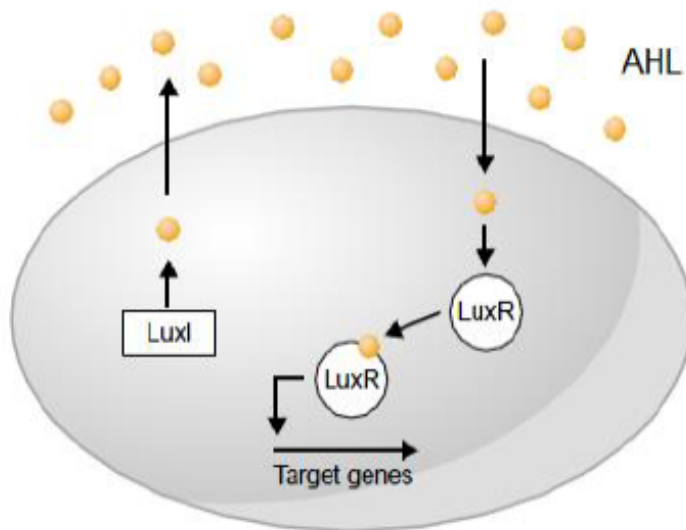


### Oligopeptide Autoinducers

<i>B. subtilis</i> /ComX	ADPITRQWGD
<i>B. subtilis</i> /CSF	ERGMT
<i>S. aureus</i> /subgroup 1	YSTCDFIM S-C=O
<i>S. aureus</i> /subgroup 2	GVNACSSLF S-C=O
<i>S. aureus</i> /subgroup 3	YINCDFLL S-C=O
<i>S. aureus</i> /subgroup 4	YSTCYFIM S-C=O

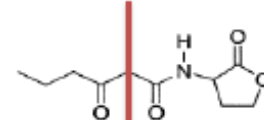
# Gram negative

## Gram-negative bacteria

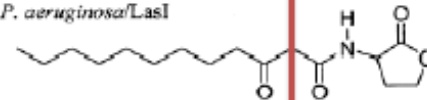


### Acyl-Homoserine Lactone Autoinducers

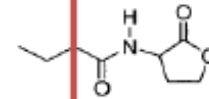
*V. fischeri*/LuxI



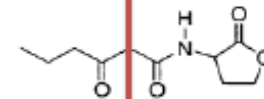
*P. aeruginosa*/LasI



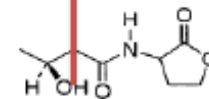
*P. aeruginosa*/RhlI



*P. stewartii*/EsaI



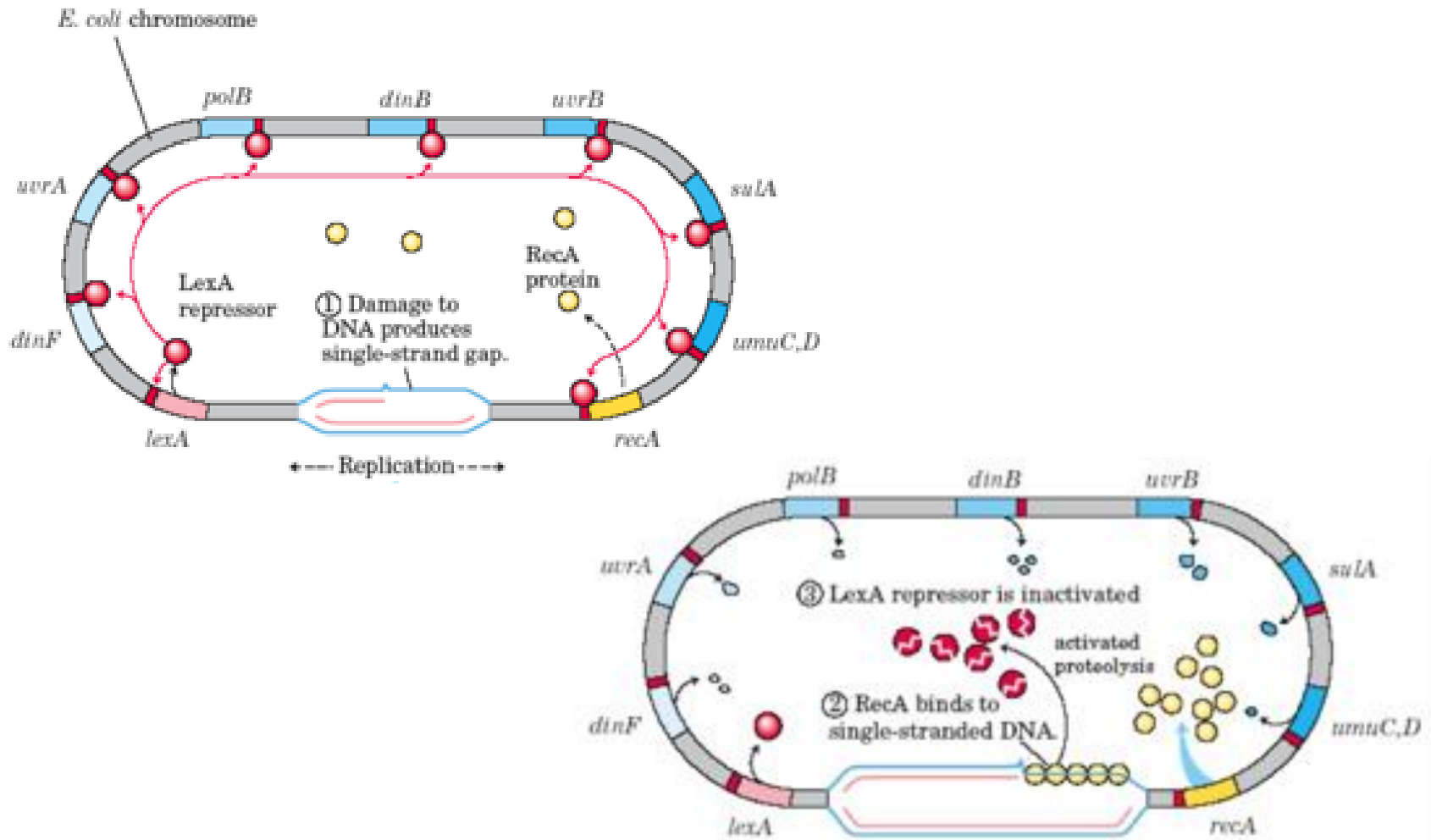
*V. harveyi*/LuxLM



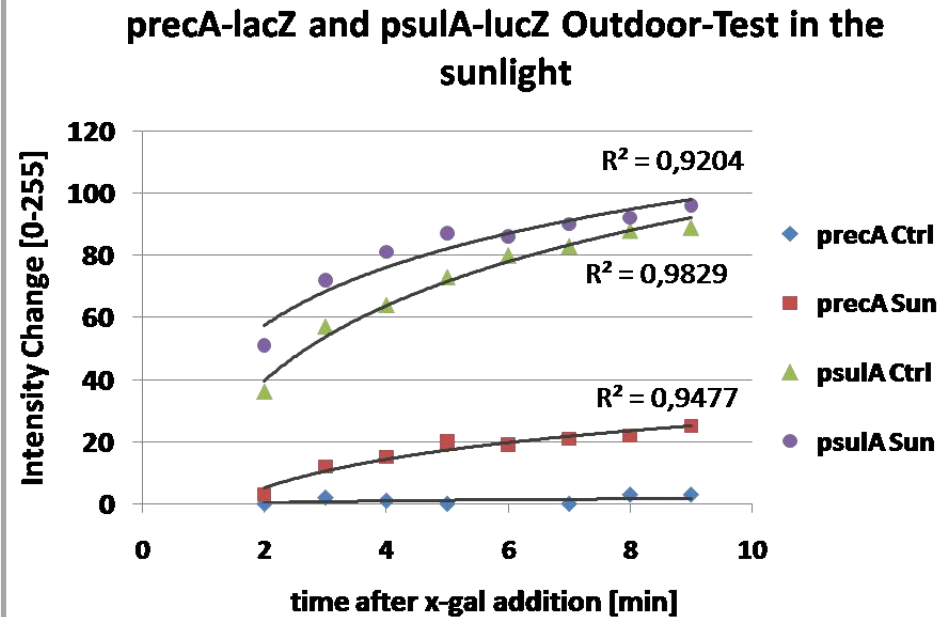
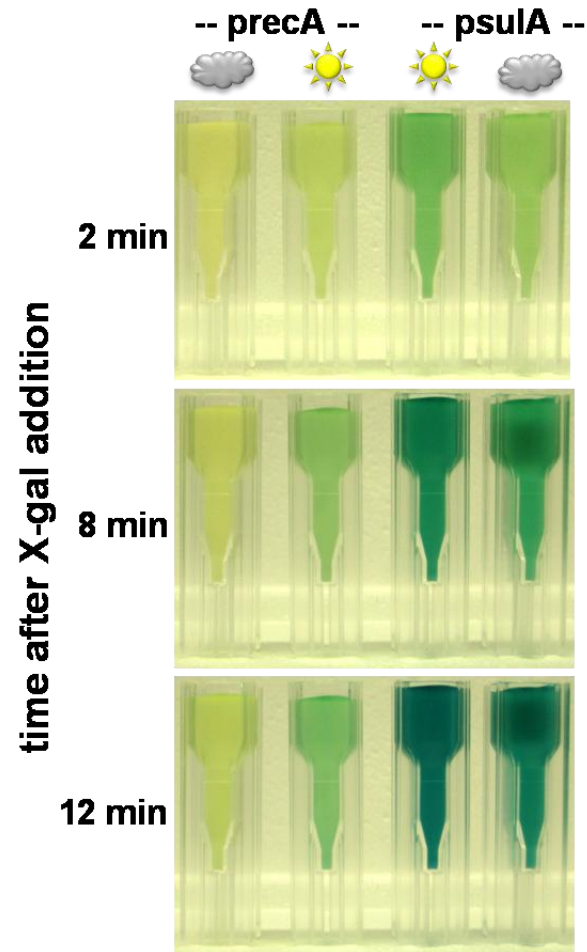
# Inhibit quorum sensing

- Target signal generation
- Target signal dissemination
- Target signal receptor

# Team Heidelberg



# Team Heidelberg



# Team Taipei

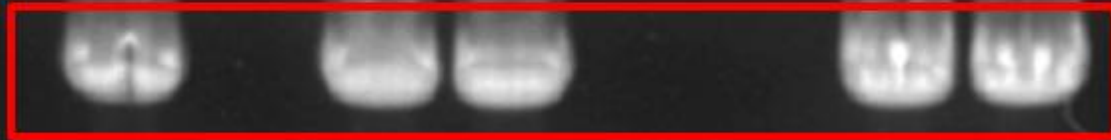
K1253500

c-Myc

3 kb

1.5 kb

1 kb





# Team Taipei

